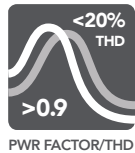
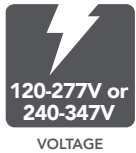


# LEDBARKIT-INTERNAL DRIVER (LBI) THE LINEAR TRANSFORMER



## one light – unlimited possibilities



available in both  
BASE & PRO

	PRO	BASE
DIMMABLE	✓ 0-10V	—
CONTROL POWER	✓ 12V	—
FLEX COLOR	✓	—
FLEX WATT	✓	—
WARRANTY	10YR	5YR
L70	>100,000 HRS	50,000 HRS

### DEFAULT CONFIGURATIONS

PART #	UPC	DESCRIPTION	WATTAGE	LUMENS	LPW	CCT (K)	DLC PRODUCT CODE
RP-LBI-G1-2F-6W-27K-WC2	844006024826	2FT PRO WARM CCT INTERNAL DRIVE LIGHT BAR	6/9/12	696-1524	116-127	2700/3000/3500	
RP-LBI-G1-2F-6W-40K-WC	844006023867	2FT PRO INTERNAL DRIVE LIGHT BAR	6/9/12	780-1560	126-137	3500/4000/5000	PFLO5RPC
RP-LBI-G1-3F-10W-27K-WC2	44006024833	3FT PRO WARM CCT INTERNAL DRIVE LIGHT BAR	10/12/15	1270-1980	127-132	2700/3000/3500	
RP-LBI-G1-3F-10W-40K-WC	844006023959	3FT PRO INTERNAL DRIVE LIGHT BAR	10/12/15	1400-2100	137-142	3500/4000/5000	PTTC4A0W
RP-LBI-G1-4F-15W-27K-WC2	844006024840	4FT PRO WARM CCT INTERNAL DRIVE LIGHT BAR	10/15/25	1260-3400	126-136	2700/3000/3500	
RP-LBI-G1-4F-15W-40K-WC	844006024079	4FT PRO INTERNAL DRIVE LIGHT BAR	10/15/25	1462-3653	136-146	3500/4000/5000	PCW0MQPB
RP-LBI-G1-4F-15W-40K-B	844006024215	4FT BASE INTERNAL DRIVE LIGHT BAR	15	1996	139	4000	PMROEESV

Default settings are above. See pages 7 and 8 for additional styles, lumen packages, color temperatures and options.

### ACCESSORIES (SOLD SEPARATELY)



(CHECK OUT OUR WBSITE FOR EVEN MORE OPTIONAL ACCESSORIES)

**RemPhos** by Light Efficient Design  
lighting on target

Light Efficient Design • 188 S. Northwest Highway • Cary, IL 60013 • 847.380.3540 • led-llc.com

11.08.19 Information is subject to change without notice.



# LED BARKIT-INTERNAL DRIVER (LBI) THE LINEAR TRANSFORMER



## Usage & Applications

One solution. ETL and DLC listed as both a retrofit kit and a fixture.



Using the fast install magnetic brackets, light bars fit between any T5, T8 or T12 socketed fixture including

### TROFFERS



Example 2x2 and 2x4 retrofitted with 3 light bars.

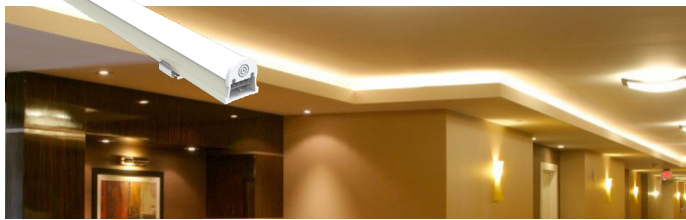
### VAPOR TIGHT

### WRAP

### HIGH BAY

### CONTINUOUS RUNS

### UTILITY STRIP



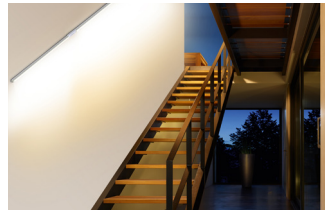
COVE LIGHTING

### RETROFIT MOUNTING KITS

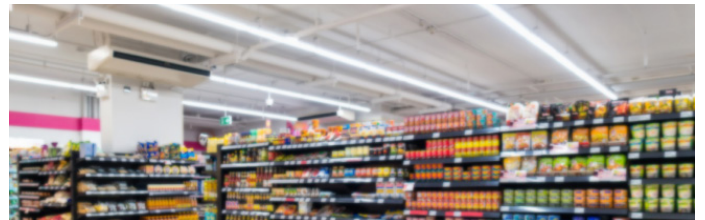
Mount light bar to a Retrofit Mounting Kit for a faster, cleaner install.  
- contact us for details.

ETL and DLC listed as a fixture under the following categories

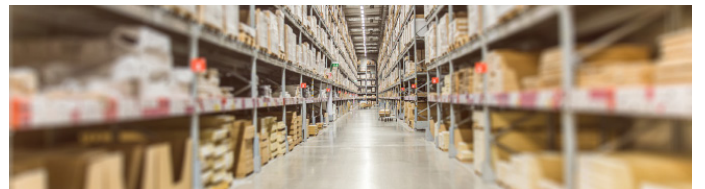
### STAIRWELL FIXTURE



### LINEAR AMBIENT FIXTURE



HIGH BAY FIXTURE (LOW CEILING HEIGHTS)

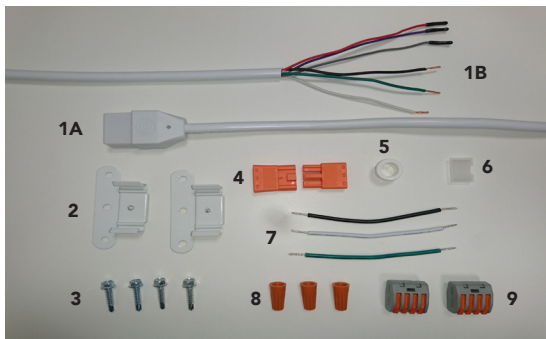


HIGH BAY FIXTURE (HIGH CEILING HEIGHTS)

### FIXTURE HOUSING KITS

Mount light bar to a Fixture Housing Kit for a faster, cleaner install.  
- contact us for details.

### INCLUDED WITH EVERY BAR



- 1A Incoming power and control cable (bar input side)
- 1B Incoming power and control cable (pig tail side)
- 2 (2) Surface mount magnetic clips (with easy bend and break lines)
- 3 (4) 1/4" hex head - self drilling screws
- 4 Service disconnect
- 5 Abrasion protection grommet
- 6 Flex setting cover
- 7 Wires for connection between service disconnect and latch connector
- 8 (3) Wire nuts for low voltage connections (0-10V DIM; 12V Aux power)
- 9 (2) Latch connectors for parallel wiring (AC power)

**RemPhos** by **Light Efficient Design**  
lighting on target